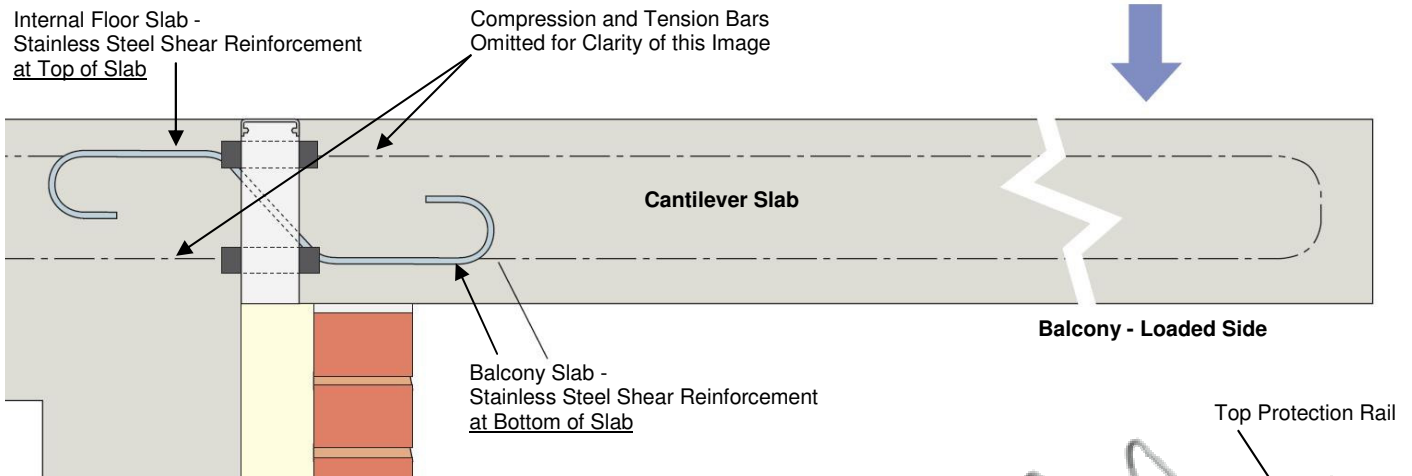


INSTALLATION GUIDE

ANCON ISOLAN

BALCONY CONNECTORS



Note: Only shear bars shown. Other reinforcement omitted for clarity

IMPORTANT NOTES

Care should be taken to avoid damaging any Isolan components prior to installation. All components should be stored under cover and away from direct sunlight. Special care should be taken of the polystyrene units. Any polystyrene which is damaged must be replaced or alternatively, where possible, patched with polyurethane foam to maintain the insulation properties.

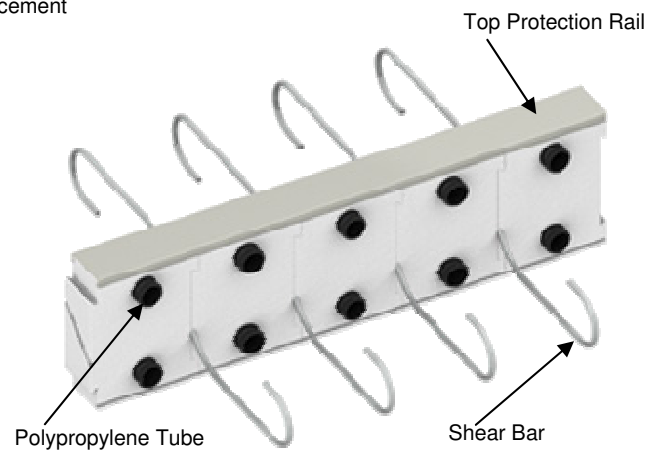
The stainless steel shear bars may only be used as whole elements; modifications may only be carried out on the instructions of an engineer.

The compression and tension reinforcement required by this system is to be supplied by others (grade 500B).

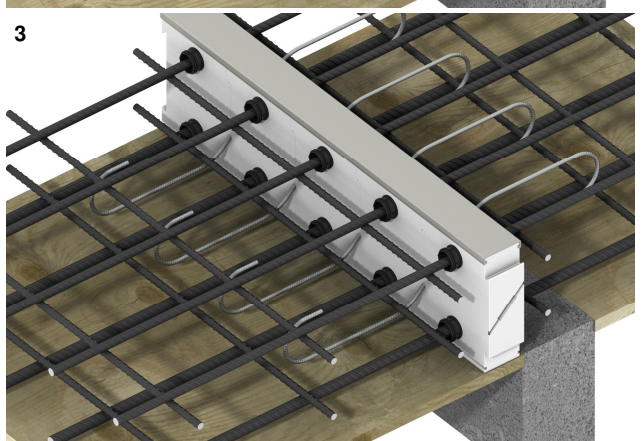
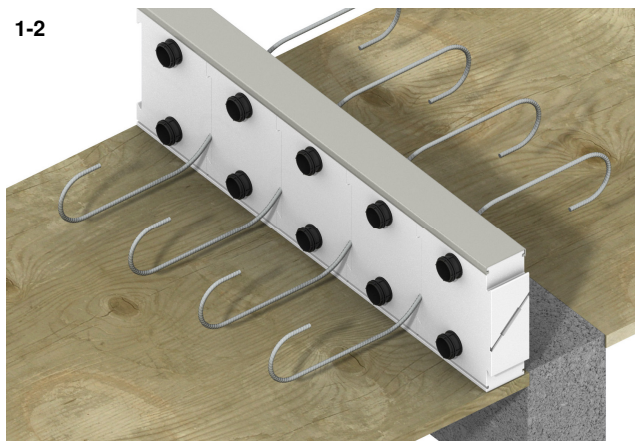
INSTALLATION

These steps are provided as guidance and should be followed in conjunction with the site engineer's instructions and structural engineer's reinforcement details. Installation is described and illustrated for the MV system but is the same for the Ancon Isolan V system where the tension bars are excluded.

1. The Isolan system should be orientated so the stainless steel shear reinforcing bars are at the bottom of the slab on the side of the load (the balcony side).
2. The unit is then positioned and secured to the formwork.
3. Grade 500B compression and tension bars, **supplied by others**, are passed through the polypropylene tubes and secured to the main floor slab and balcony reinforcement. The minimum anchor length must be achieved either side of the Isolan system (see table overleaf for detailed dimensions). Care should be taken to ensure that any misalignment of the compression bars does not exceed 25mm in 1000mm (1 in 40) as illustrated in the Part Plan View diagram overleaf.
4. Concrete is poured, preferably adjacent to the Isolan system and simultaneously to either side to avoid any displacement of the polystyrene units. If the concrete is poured on one side only, the second side being at a later date, then the Isolan units must be securely fixed to avoid displacement.



Ancon Isolan MV System



Tension & Compression Reinforcement Supplied by Others

INSTALLATION GUIDE ANCON ISOLAN BALCONY CONNECTORS

MAXIMUM MISALIGNMENT OF COMPRESSION BARS

The minimum anchor length must be achieved either side of the Isolan system (see table for detailed dimensions). Care should be taken to ensure that any misalignment of the compression bars does not exceed 25mm in 1000mm (1 in 40) as illustrated in the Part Plan View diagram.

REINFORCEMENT ANCHORAGE

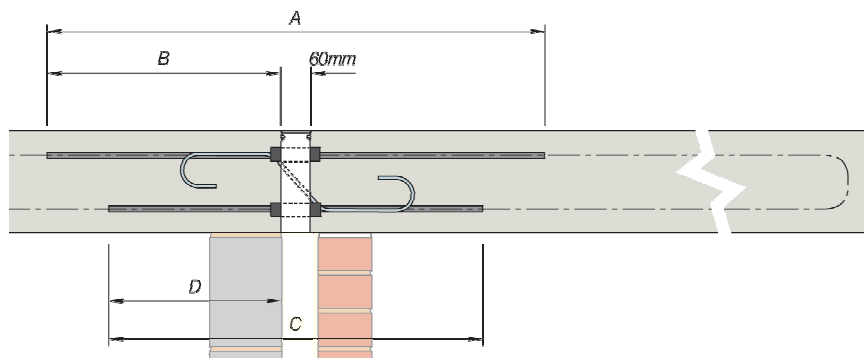
The table provides the minimum anchorage lengths for the Grade 500B tension and compression reinforcement **to be supplied by others**. The minimum length of the tension anchorage rebar shall be 50D where D is the nominal rebar diameter. The minimum length of the compression anchorage rebar shall be 35D where D is the nominal rebar diameter.

CONCRETE STRENGTH

The structural slab shall have a minimum concrete strength Class C25/30 (cylinder/cube compressive strengths). Durability considerations may result in the selection of a higher strength class for most UK applications.

SPECIAL CONFIGURATIONS

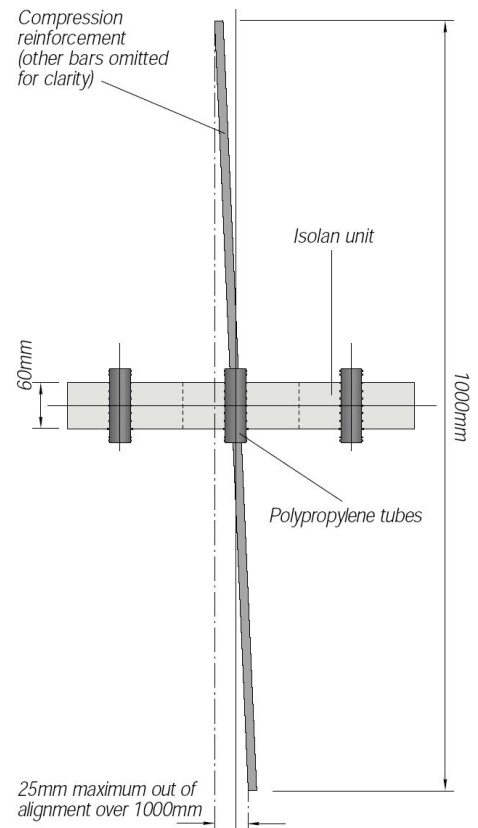
Load distribution reinforcing bars must be installed at the bends of the shear reinforcement.



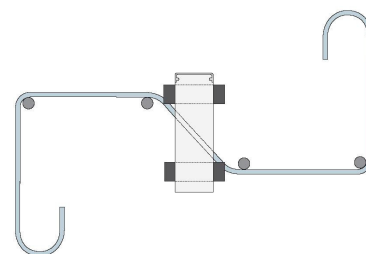
Minimum Reinforcement Anchorage Lengths

Rebar Size (mm)	Tension Anchorage (mm)	Compression Anchorage (mm)	Tension Bars		Compression Bars	
			Dimension A min. (mm)	Dimension B min. (mm)	Dimension C min. (mm)	Dimension D min. (mm)
10	500	350	1060	500	760	350
12	600	420	1260	600	900	420
16	800	560	1660	800	1180	560
20	1000	700	2060	1000	1460	700

The tension anchorage length is longer than required by BS 8110-1:1997, Table 3.25



Part Plan View - Maximum Misalignment



Special Configuration

© Ancon Building Products, 2006

The Construction applications and details provided in this guide are indicative only.

In every case installation should be entrusted to appropriately qualified and experienced persons.

Normal handling precautions should be taken to avoid physical injury. Ancon Building Products cannot be held responsible for any injury as a result of using our products, unless such injury arises as a result of our negligence.