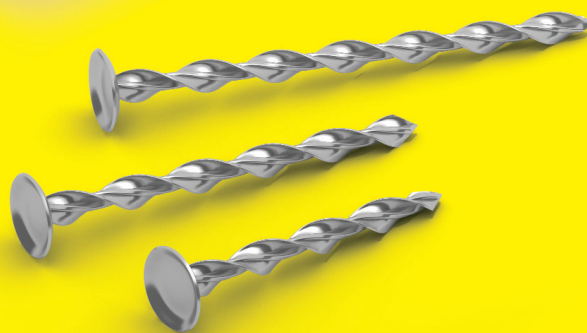


Anchors for drywall and insulated plasterboard

Staifix Insofast ISF 18A

- Fire-proof mechanical fixing
- Helical shaft minimises heat loss through cold bridging
- Countersunk head prevents tearing
- Dished head retains filler
- Dependable performance
- Can be used to replace or to complement 'dot and dab' installation
- Suitable for fixing into a wide range of construction materials
- Fixes plasterboard to lightweight block without pre-drilling



Staifix[®]

insofast[®]

secure in the knowledge

Part of the Staifix range
of helical fixings from

Ancon[®]
BUILDING PRODUCTS

Tel: 0114 238 1 238

Email: info@ancon.co.uk

Visit: www.ancon.co.uk

Staifix Insofast ISF 18A

Anchors for drywall and insulated plasterboard

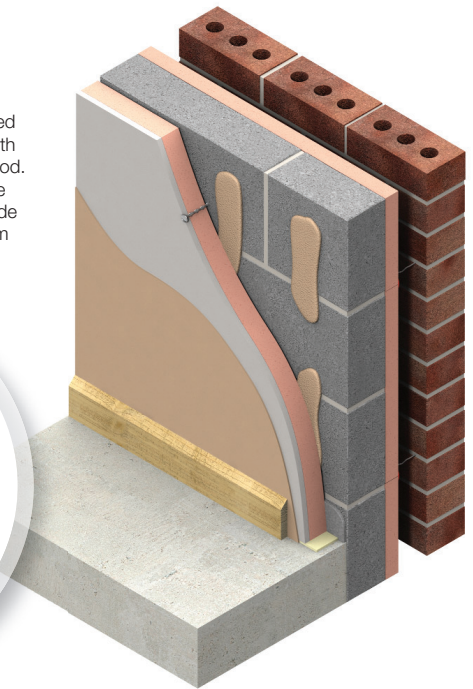
A one piece metal fastener with a dish-profiled head for mechanically securing drywall and insulated plasterboard panels to walls.

This fire-proof metal fastener has a self-tapping helical shank with work-hardened blades that cut into a wide range of masonry and timber substrates.

Three fixings required per panel if used with 'dot and dab' method. Each dab should be 50mm to 75mm wide and approx. 250mm long.



ISF 18A
and SDS adaptor



Benefits

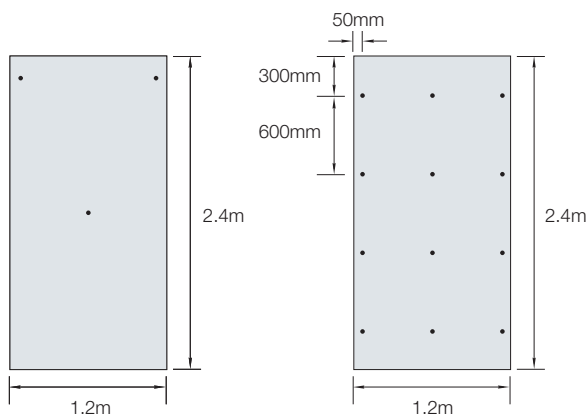
Staifix Insofast ISF18A fixings are suitable for use with all types of insulated drywall boards. They can be used in conjunction with 'dot and dab' adhesive (3 per board) or in place of it (12 per board).

Critically, these high integrity mechanical fixings ensure stability of the boards in the event of a fire to prevent escape routes from becoming blocked.

Heat loss through cold bridging is minimised thanks to a thermally-efficient spiral shaft; the cross-sectional area is just 25% that of a solid shaft of equal diameter.

Installation

The fixings are driven-in by the adaptor illustrated above, powered by a standard SDS hammer drill. The anchor drives directly into aircrete blocks and softwood timber. A 5mm pilot hole is recommended for brick, concrete block and hardwood.



• = Position of fixing
If used with 'dot and dab'
method

• = Position of fixing
If used instead of
'dot and dab' method

Product Specification

Material	Zinc plated AISI 1008 Steel Austenitic 304 Stainless Steel
CSA of shank	9mm ²
Typical load (1mm deflection)	Aircrete 649N Brick 622N Softwood 681N
Typical pull through	(9.5mm plasterboard) 255N (12.5mm plasterboard) 340N
Embedment depth	Aircrete Block 50-75mm Brick/Concrete Block 40-60mm Softwood 35-50mm
Available lengths	65mm 85mm 105mm 125mm 145mm

Ancon[®]
BUILDING PRODUCTS

Ancon Building Products

President Way, President Park, Sheffield S4 7UR

Tel: +44 (0) 114 238 1238

Fax: +44 (0) 114 276 8543

Email: info@ancon.co.uk

www.ancon.co.uk

Manufactured under license of European patent numbers
EP1307303 and EP1710372.