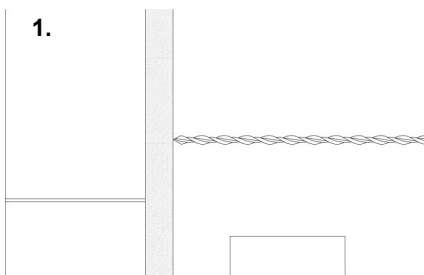


Installation Guide

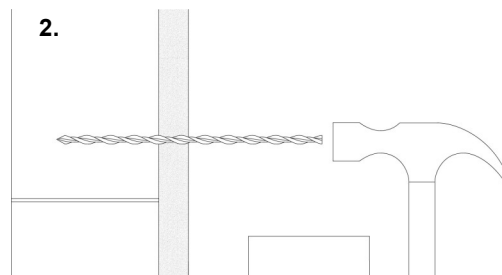
Ancon Staifix TJ2 Wall Ties

For Thin-Joint Blockwork

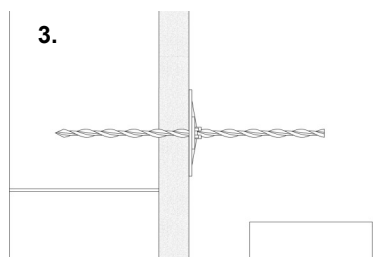
Installation Procedure



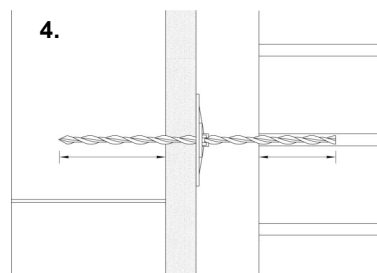
1. Keep the brickwork one course clear during installation of the ties. Position the tie against the inner leaf so that the outer end will be located in the bed joint of the external leaf.



2. Hammer the tie, through the insulation, and into the blockwork to the correct embedment.



3. Install a black Teplo Clip to restrain the insulation.



4. Build into the bed joint of the outer leaf ensuring the tie is surrounded by mortar.

The Ancon Staifix-Thor Helical TJ2 Tie hammers directly into aerated concrete blocks. It is ideal for thin-joint blockwork and other applications where the joints in the inner and outer leaves of masonry are not aligned.

The TJ2 is suitable for housing and small commercial developments. It meets the requirements of the NHBC and PD 6697 as a type 2 or 3 wall tie depending on the block used and the cavity width (see table below).

BLOCK STRENGTH N/MM ²	TIE TYPE TO PD 6697	
	50, 75, 100MM CAVITY	125MM, 150MM CAVITY
2.8 - 4.0	3	3
4.0 - 10.5	2	2

TIE LENGTH	CAVITY WIDTH
205 mm	50 mm
230 mm	75 mm
255 mm	100 mm
280 mm	125 mm
305 mm	150 mm

The Construction applications and details provided in this guide are indicative only. In every case installation should be entrusted to appropriately qualified and experienced persons. Normal handling precautions should be taken to avoid physical injury. The company cannot be held responsible for any injury as a result of using our products, unless such injury arises as a result of our negligence.

© Protected by copyright