

Introducing The New Bond



The Teplo-BF is a smart black tie with a thermal conductivity of **00.7W/mK**.

Featuring moulded safety ends, mortar bond is improved by up to 80%.

- ✓ Robust mortar bond
- ✓ Improved buildability
- ✓ Moulded safety ends

... plus all the thermal benefits of the original basalt-fibre TeploTie



Teplo-BF is the latest addition to the award-winning Teplo range of low thermal conductivity wall ties



Ancon[®]
BUILDING PRODUCTS

www.ancon.co.uk/Teplo

Teplo Basalt Fibre Wall Ties

Wall ties are an essential element in the strength and stability of cavity walls; typically by crossing the insulated cavity they act as a thermal bridge between the internal and external leaves, allowing heat to escape from the building. Ancon Teplo wall ties are different; they are manufactured from basalt fibres set in a resin matrix - an innovative material that virtually eliminates this issue.

Teplo wall ties have a thermal conductivity of just 0.7W/mK. They are excluded from U-value calculations to BS EN ISO 6946, minimising insulation thickness and wall footprint, and are commonplace on PassivHaus and Zero Carbon developments. The Teplo range is BBA approved and meets the technical requirements of the NHBC.



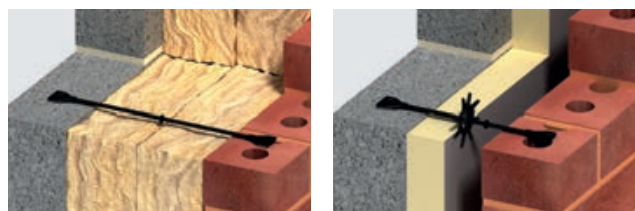
Teplo-BF

The Teplo-BF features moulded safety ends that offer improved buildability and mortar bond strength over the original TeploTie. The enhanced 'bond' makes it ideal for use in slow drying lime mortars. It is available in the same wide range of lengths and types as the original TeploTie and suitable for cavities up to 450mm.



Teplo-BF Range

Product Reference	Tie Length (mm)	Cavity Width (mm)	Tie Type to PD 6697*	Thermal Conductivity (W/mK)**
Teplo-BF1	200	50-75	1 (Heavy duty)	0.7
	225	76-100		
	250	101-125		
	275	126-150		
Teplo-BF2	200	50-75	2 (General purpose)	
	225	76-100		
	250	101-125		
	275	126-150		
	300	151-175		
	325	176-200		
	350	201-225		
	375	226-250		
	400	251-275		
Teplo-BF3	450	301-325	3 (Basic)	
	475	326-350		
	500	351-375		
	525	376-400		
Teplo-BF4	200	50-75	4 (Light duty)	
	225	76-100		
	250	101-125		
	550	401-425		
	575	426-450		



Increasing wall tie density above the standard 2.5 ties per square metre can improve the Tie Type performance e.g. Type 3 to Type 2 etc. Contact Ancon for more information.

* The Teplo-BF has been independently tested to BS EN 845-1:2013 and converted to Tie Types by Lucideon/PD6697.

** Wall Ties with a thermal conductivity of less than 1.0W/mK are excluded from U-value calculations to BS EN ISO 6946.

Teplo Range - exclusive to Ancon Building Products



TeploTie

The original plain-ended basalt-fibre wall tie, used in new-built cavity walls or resin-fixed into an existing structure during retrofit.

Teplo-L-Tie

Featuring an 'L' shaped stainless steel upstand, mechanically and chemically bonded to one end, this basalt-fibre tie is suitable for surface fixing to an in-situ masonry leaf or structural frame.

T: +44 (0) 114 275 5224 W: www.ancon.co.uk/Teplo