

## Ancon®

# Installation Guide

## Sliding Anchors

### Ancon SAH - Sliding Anchors

Sliding anchor fixings provide restraint to the top of masonry cavity wall panels. The sliding anchor fixing will accommodate vertical movement due to shrinkage or thermal movement of the wall or structural frame. The sliding anchor ties slide up or down relative to the movement.

#### Installation

The sliding anchor stems can be fixed to concrete or steelwork. The standard method of fixing to concrete is achieved by utilising an M10 expansion bolt through the standard 12mm diameter hole in the head of the stem. The size of hole in the stem can be varied between 6mm and 14mm dependent upon the type of bolt used. The sliding anchor stems can also be fixed back to 30/20 and 28/15 cast-in channels.

When fixing to steelwork, it is recommended that stainless steel setscrews are used with nylon washers to give isolation between the bolt head and the structural steel.

It is important when the stem is installed that it is vertical in both planes and central in the clear cavity.

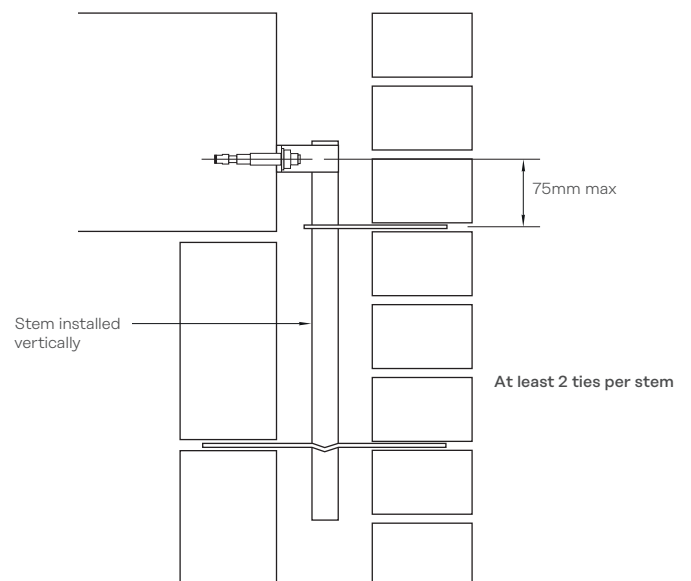
#### Tie Installation

The length of both one-way and two-way ties should be such to allow a recommended embedment of 62.5mm in each leaf, thus allowing some tolerance for cavity variations. To achieve a design resistance of 755N per stem, the upper tie must be located within 75mm of the fixing. Ties should be spaced at a minimum of 150mm and at least two ties should be used per stem.

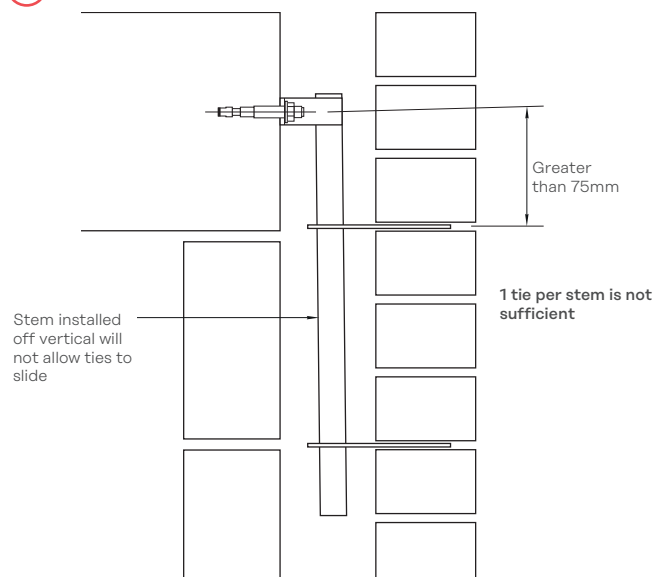
#### Safety Precautions

Ancon stainless steel products are produced from sheared plate. As with all such industrial fabrications, these may present sharp edges. **Suitable personal protective equipment should be worn at all times during handling and installation.**

#### ✓ Correct Installation



#### ✗ Incorrect Installation

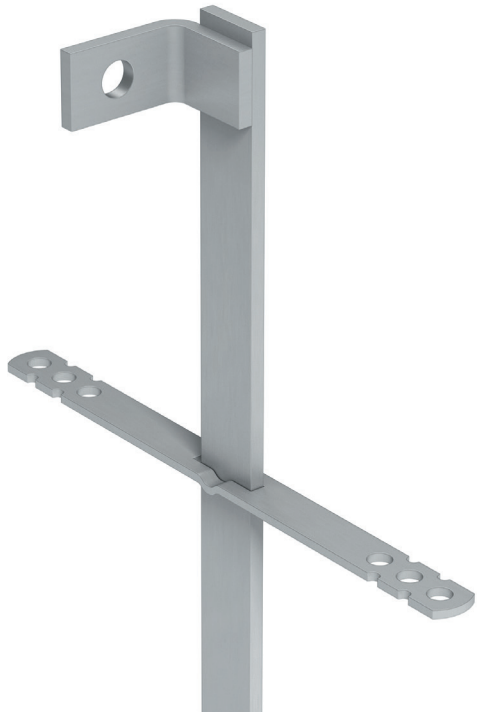


# Installation Guide

## Sliding Anchors

### SIS Sliding Anchor Ties

Ancon SIS two-way safety end ties are installed by sliding the tie onto the stem and positioning as required. The tie should be installed so that the drip is pointing downwards to ensure moisture cannot track back along the tie.



### SPJ Sliding Anchor Clip-on Ties

Ancon SPJ one-way safety end ties are installed by rotating the tie onto the stem and positioning as required.

