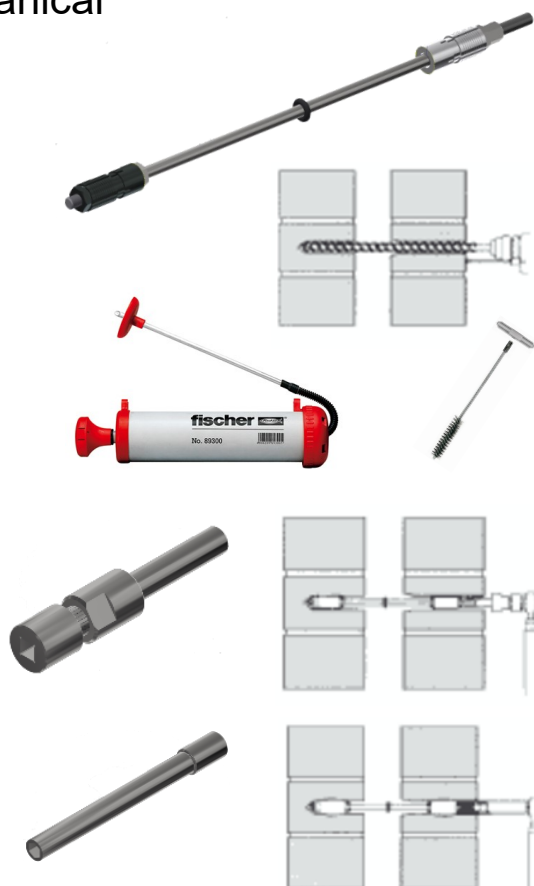


## Installation Guide

# MM63 Remedial Wall Tie

## Mechanical/Mechanical

- Using a 12mm masonry drill bit, drill a hole through the outer leaf angled slightly upwards at approx. 10° until you reach the cavity void.
- With the tip of the drill touching the inner leaf, set the depth gauge on the drill to 55-65mm. Drill a hole in the inner leaf to the gauge depth.
- Ensure both holes are free from debris using either brush or blow bulb.
- Check the cavity width at regular intervals to ensure the correct tie length is used.
- Screw the threaded inner setting tool on to the M6 thread on the tie and insert the tie to the full depth of the hole in the inner leaf. Tighten inner expander with pre-set torque wrench to 6.8Nm. Remove setting tool. [Note: If inner expander does not engage, manually expand the inner expander slightly by hand until it grips the inside of the hole].
- Fix the hex head outer setting tool onto the torque wrench and set the outer expander by tightening the nut until pre-set torque is reached. Seal hole in brick with colour matching mortar.



### Ancon MM63 Range [Mechanical/Mechanical]

Drill (mm)	Tie Length (mm)	Nominal Cavity Width (mm)	Ultimate Tensile Load (kN)		
			Concrete 30N	Common	Dense Concrete Blockwork
12	200	45 - 70	8	6	3
	225	70 - 95			
	255	100 - 125			

#### Notes:

- Substrate strengths and types may vary.
- Performance figures are indicative.
- Ancon recommends site testing to determine performance in actual substrates for each project.
- Holed bricks and hollow blocks may detrimentally affect performance.

The Construction applications and details provided in this guide are indicative only. In every case installation should be entrusted to appropriately qualified and experienced persons. Normal handling precautions should be taken to avoid physical injury. The company cannot be held responsible for any injury as a result of using our products, unless such injury arises as a result of our negligence.

© Protected by copyright