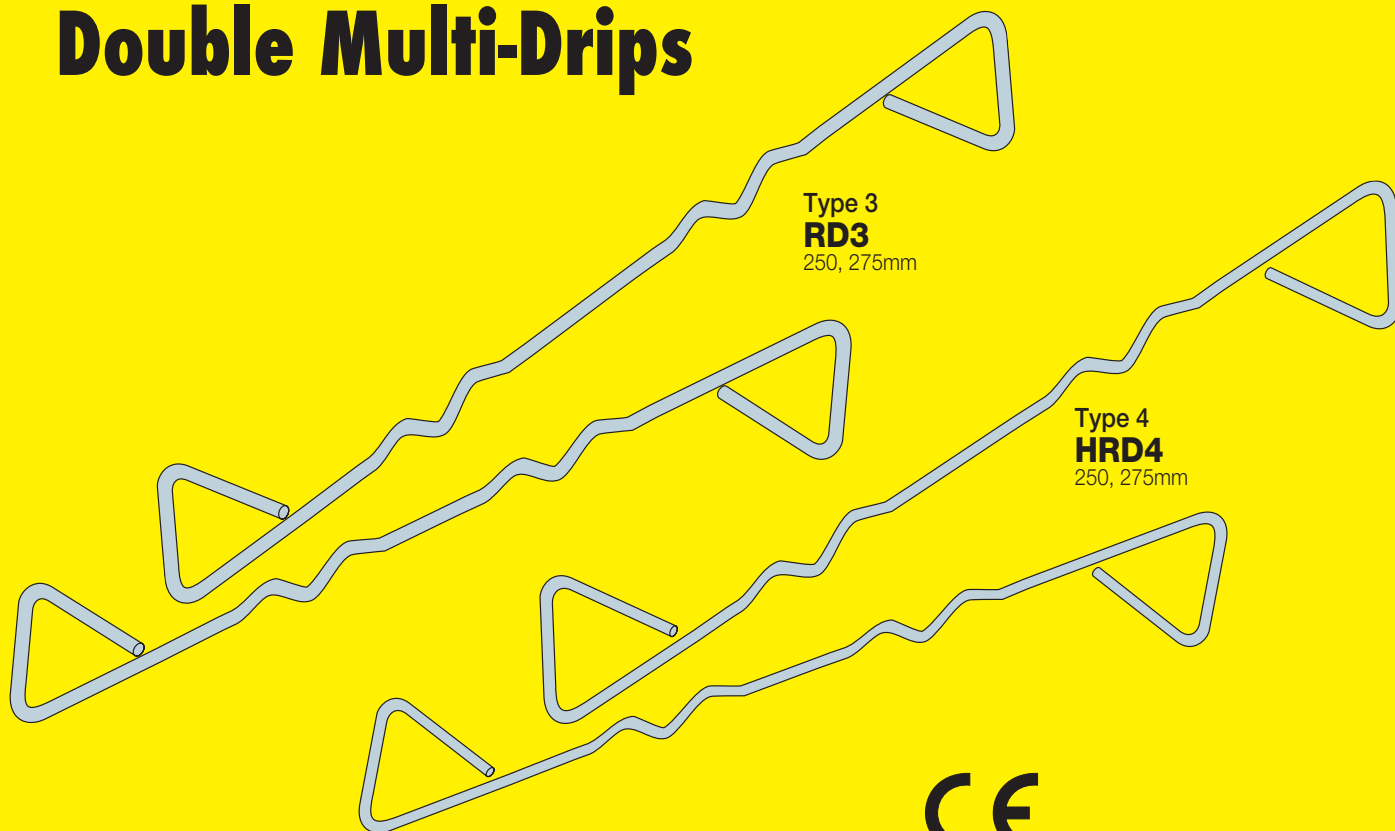


# Staifix®

Stainless steel wall ties

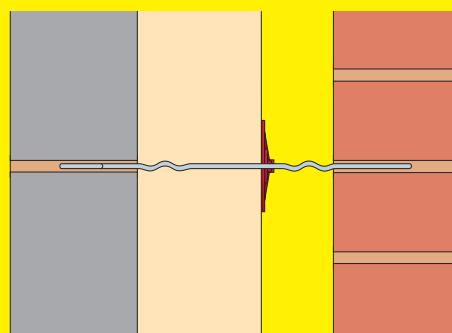
NEW

## Cavity Wall Ties with Double Multi-Drips



- ✓ Ideal for use in partial-fill insulated cavities, especially where the open cavity is small
- ✓ Available as Type 3 and Type 4 wall ties in two lengths to suit cavities up to 150mm
- ✓ CE marked to BS EN 845-1
- ✓ Feature specially designed safety ends to provide excellent mortar key, prevent tangling and reduce the risk of injury during handling and installation
- ✓ Manufactured from high tensile stainless steel wire which offers high resistance to corrosion and low thermal conductivity

CE



250mm long for cavities from 101-125mm  
275mm long for cavities from 126-150mm

### Suitability

The Staifix HRD4 is a Type 4 wall tie suitable for external masonry cavity walls of box-form houses up to 10 metres high. The Staifix RD3 is a Type 3 tie suitable for external walls of houses and small commercial buildings up to 15 metres in height. Consult PD6697 for full information on wall tie types. Contact Ancon for assistance with product selection.

### Density and Spacing

Wall ties should be used at not less than 2.5 per square metre (900mm horizontal and 450mm vertical centres) and preferably staggered over the wall area. This density may be varied by building regulations and should be increased to 3-4 per square metre at openings and unbonded edges.

Manufactured by

**Ancon**<sup>®</sup>  
BUILDING PRODUCTS

Tel: 0114 238 1 238

Email: [info@ancon.co.uk](mailto:info@ancon.co.uk)

Follow: @AnconUK

Visit: [www.ancon.co.uk](http://www.ancon.co.uk)