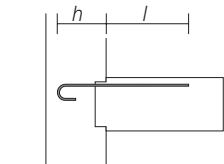


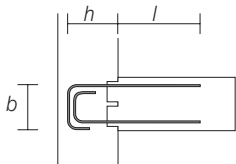
Enquiry/Order Form - Eazistrip Reinforcement Continuity Systems

Please provide product requirements and contact details.

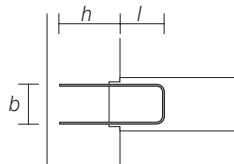
Date _____	Order <input type="checkbox"/>	Enquiry <input type="checkbox"/>	Delivery Date _____
Company _____			Delivery Address _____
Address _____			
Town _____		Post Code _____	
Contact _____			Contact _____
Tel _____			Tel _____
Email _____			Email _____



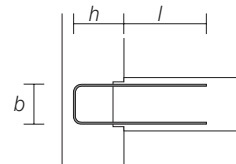
Type H Hook
(standard in 80mm box)



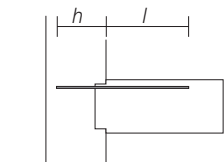
Type 2H Two Single Hooks used for boxes wider than 240mm



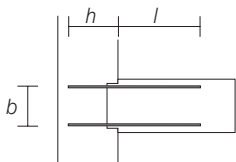
Type RU U Bar
(not available in 80mm box)



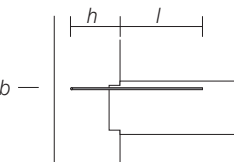
Type U U Bar/ DH Double Hook
(not available in 80mm box)



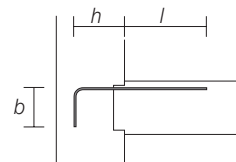
Type S Straight Bar



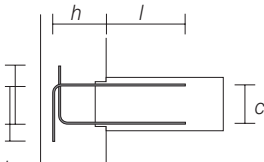
Type S2 Double Straight Bar



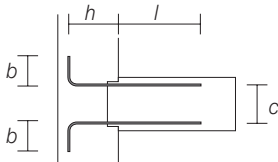
Type SH Angle with leg in horizontal plane



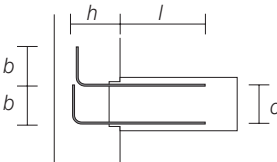
Type RA Angle



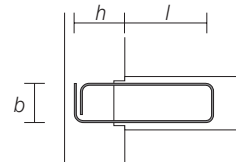
Type RA1 Double Angle



Type RA2 Double Angle



Type RA3 Double Angle



Type CS Closed Stirrup

Item	Quantity	Box Width (1) (mm)	Bar Dia 10, 12, 16 (mm)	Stirrup Spacing (2) (mm)	Stirrup Type (see above)	Box Length (3) (mm)	Stirrup Width (4) b (mm)	Stirrup Height h (mm)	Anchoring Length l (mm)	Stirrup Width (5) c (mm)
Re-bending Tool										

(1) Standard box widths 80, 110, 140, 160, 190 and 240mm.
 (2) Variable stirrup spacing available. Standard spacing 150 and 200mm.
 (3) Box lengths up to 3000mm available in certain sizes dependant upon weight. Standard length 1200mm.
 (4) Stirrup width b is 20mm less than box width as standard. Special spacing for all types available on request.
 (5) For types RA1, RA2 and RA3, please state dimension c.
Note: Bars must be straightened using an Eazistrip re-bending tool. Do not straighten bars more than once.