

Leviat®

CI/SfB	(29)	Et6	
May 2026			

Features CARES-approved  
ANCON CXL COUPLER SYSTEM



# CB Coupler Box and CS Coupler Strip

## Reinforcement Continuity Systems

Fast and safe to install without  
manual bar bending

**Ancon®**

# Leviat

We imagine, model and make engineered products and innovative construction solutions that help turn architectural visions into reality and enable our construction partners to build better, safer, stronger and faster.

**Leviat is a world leader in connecting, fixing, lifting and anchoring technology.**

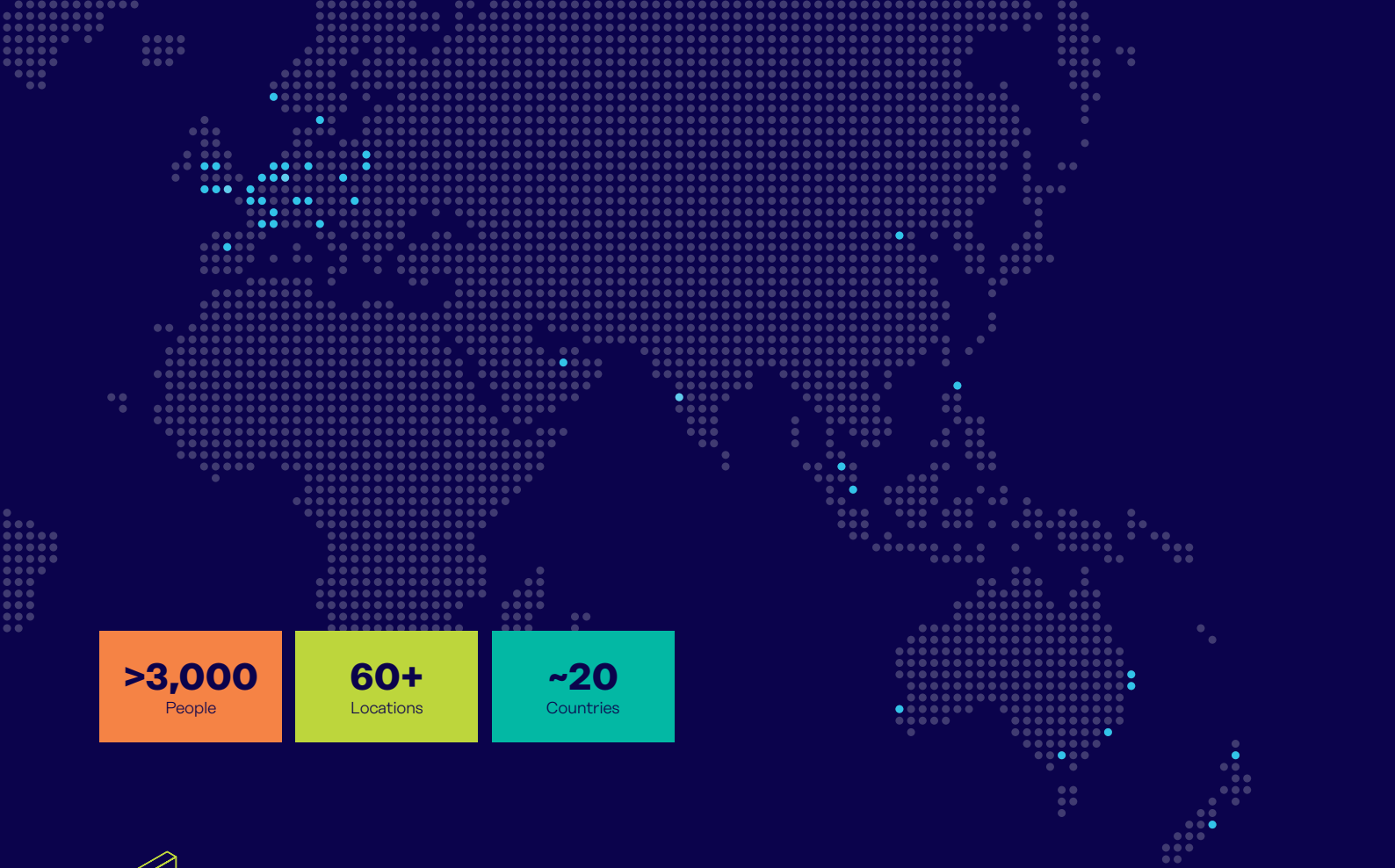
From the build of new schools, hospitals, homes and infrastructure, to the repair and maintenance of heritage structures, our engineering skills are making a difference around the world.

We provide technical design assistance at every stage of a project, from initial planning to installation and beyond.

Our technical support services range from simple product selection through to the development of a fully customised project-specific design solution.

Every promise we make locally, has the commitment and dedication of our global team behind it. We employ almost 3,000 people at 60 locations across North America, Europe and Asia-Pacific, providing an agile and responsive service worldwide.

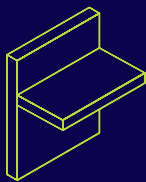




**>3,000**  
People

**60+**  
Locations

**~20**  
Countries

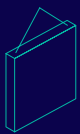


### Structural Connections

Systems to form robust, efficient connections, and continuity of concrete reinforcement as necessary, between walls, slabs, columns, beams and balconies, providing structural integrity as well as enhanced thermal and acoustic performance.

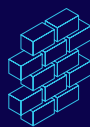
- Insulated balcony connectors
- Reinforcing bar couplers
- Concrete Connections
- Reinforcement continuity systems
- Punching shear reinforcement
- Shear load connectors
- Floor Joint Systems
- Precast / Reinforced Columns
- Infrastructure Products
- Precast Connections
- Acoustic dowels and bearings
- Prestress

### Other areas of expertise:



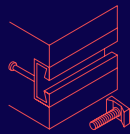
#### Lifting & Bracing

Systems for the safe and efficient transportation, lifting and temporary bracing of cast concrete elements and tilt-up panels before permanent structural connections are made.



#### Façade Support & Restraint

Systems for the safe and thermally-efficient fixing of the external building envelope, including brick and natural stone, insulated sandwich panels, curtain walling and suspended concrete façades, and also the repair and strengthening of existing masonry installations.



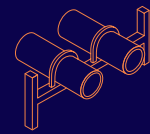
#### Anchoring & Fixing

Systems for fixing secondary fixtures to concrete, including anchor channels, bolts and inserts; also tension rod systems for roofs and canopies.



#### Formwork & Site Accessories

Non-structural accessories that complement our engineered solutions and help keep your construction environment operating safely and efficiently, including moulds for casting standard and special concrete elements and construction essentials such as reinforcing bar spacers.



#### Industrial Technology

Mounting channels, pipe clamps and other versatile framing systems that provide safe fixing in a wide range of industrial applications.

### Leviat product ranges:

Ancon | Aschwanden | Connolly | Halfen | Helifix | Isedio | Meadow Burke | Modersohn | Moment | Plaka | Scaldex | Thermomass

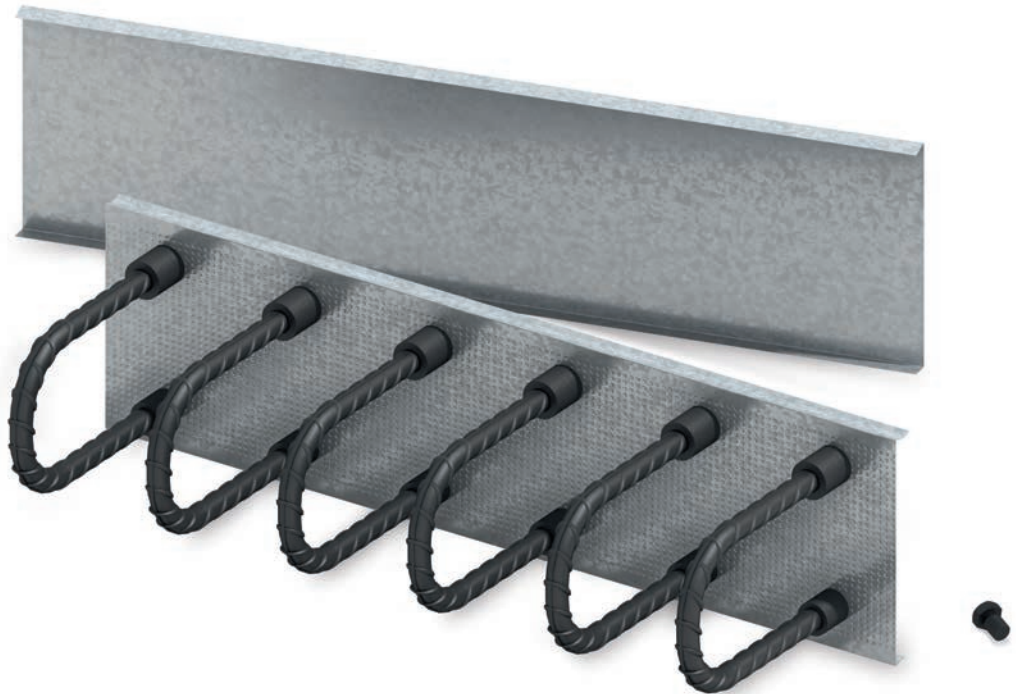
# CB Coupler Box

## Simple, fast, safe reinforcement continuity

Ancon CB Coupler Boxes simplify the continuity of reinforcement at concrete construction joints. They allow engineers to design slab-to-wall connections without the traditional restrictions on bar length and bar diameter of re-bend/pull-out continuity systems and help contractors to eliminate manual bar straightening on site.

The CB Coupler Box utilises the Ancon CARES-approved CXL mechanical rebar connection system. CXL couplers are integral to the CB box and, once the thread protection is removed, accept CXL parallel-threaded reinforcing bars (see page 5).

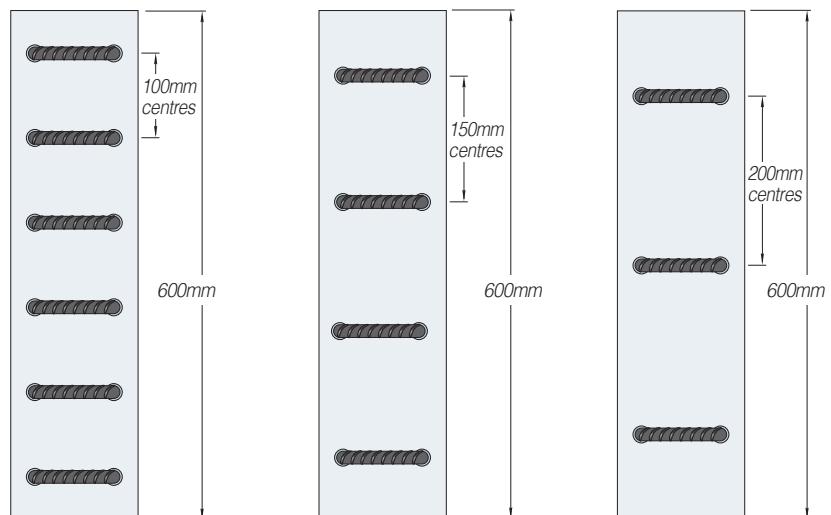
The box is cast into a concrete wall, and when the formwork is struck and the box lid and thread protection are removed, the CXL continuation bars are simply screwed into the CXL couplers when required on site, creating a strong, secure connection with the wall. The steel casing remains embedded in the wall and fills with concrete when the next section is poured; a rebated dimpled surface provides an effective shear key in accordance with EC2.



## Contents

<a href="#">CB Coupler Box</a>	2-3
<a href="#">CS Coupler Strip</a>	4
<a href="#">CXL Continuation Bars</a>	5
<a href="#">Installation Guidance</a>	6-7

### Standard Coupler Box Length and Bar Centres

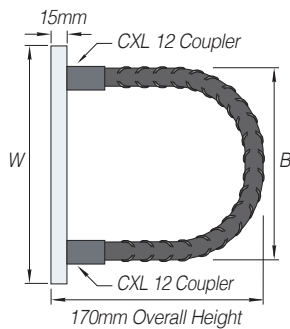


Other box lengths and bar centres are available

## Standard Coupler Box Range

### Coupler Box 12T/12C

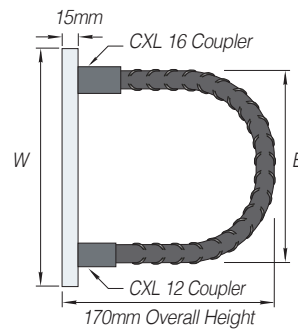
Ø12 Tension Bar  
Ø12 Compression Bar



Product Reference	Box Width W	Stirrup Width B
CB150-12T/12C	150	98
CB170-12T/12C	170	118
CB190-12T/12C	190	139
CB220-12T/12C	220	170
CB250-12T/12C	250	200

### Coupler Box 16T/12C

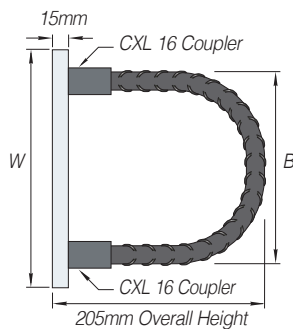
Ø16 Tension Bar  
Ø12 Compression Bar



Product Reference	Box Width W	Stirrup Width B
CB150-16T/12C	150	98
CB170-16T/12C	170	118
CB190-16T/12C	190	139
CB220-16T/12C	220	170
CB250-16T/12C	250	200

### Coupler Box 16T/16C

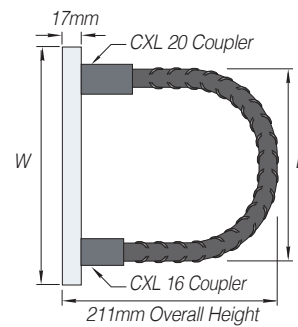
Ø16 Tension Bar  
Ø16 Compression Bar



Product Reference	Box Width W	Stirrup Width B
CB220-16T/16C	220	180
CB250-16T/16C	250	200

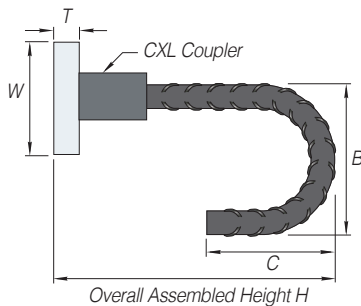
### Coupler Box 20T/16C

Ø20 Tension Bar  
Ø16 Compression Bar



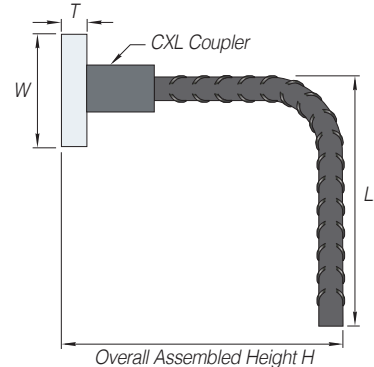
Product Reference	Box Width W	Stirrup Width B
CB220-20T/16C	220	180
CB250-20T/16C	250	200

### Coupler Box - Hook Type



Product Reference	Box Width W	Box Depth T	Stirrup Width B	Stirrup Length C	Coupler Type	Overall Height H
CB85-12H	85	15	72	125	CXL12	170
CB85-16H	85	15	96	130	CXL16	170

### Coupler Box - RA Type



Product Reference	Box Width W	Box Depth T	Stirrup Length Li	Coupler Type	Overall Height H
CB85-12RA	85	15	200	CXL12	170
CB85-16RA	85	15	380	CXL16	170
CB85-20RA	85	17	570	CXL20	225
CB85-25RA	85	21	1110	CXL25	280

**Notes:** Li leg lengths based on C32/40 concrete and couplers at 150mm centres.  
All dimensions are millimetres

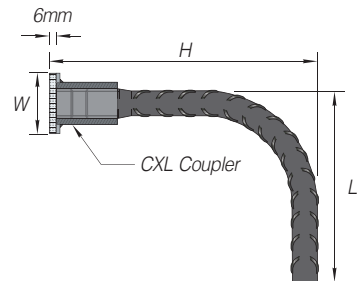
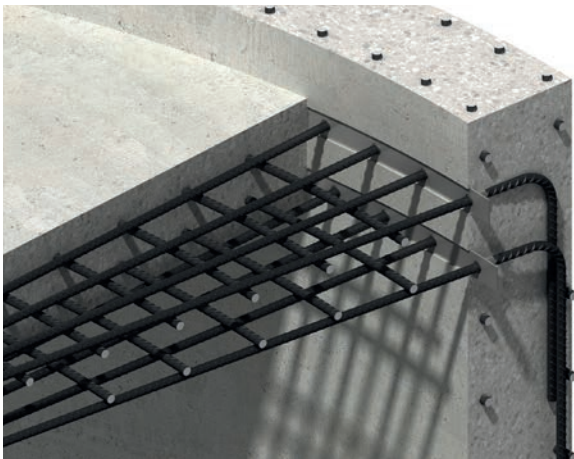
# CS Coupler Strip

Simple, fast, safe reinforcement continuity for curved walls

Ancon CS Coupler Strips offer all the benefits of CB Coupler Boxes and are specifically designed to simplify rebar continuity at joints where walls are curved on plan. The flexible steel strip used to carry the couplers is nailed directly to curved shuttering.

The CS Coupler Strip utilises the Ancon CARES-approved CXL mechanical rebar coupler system. CXL couplers are integral to the CS Strip and accept CXL parallel-threaded reinforcing bars.

The strip is cast into a concrete wall, and when the formwork is struck and the 6mm rebate former and thread protection are removed, the CXL continuation bars are simply screwed into the CXL couplers when required on site, creating a strong, secure connection with the wall. The rebate fills with concrete when the next section is poured, providing a shear key in accordance with EC2.



## Coupler Strip Range

### Coupler Strip ø12

Product Reference	Coupler Type	Width W	Length Li	Height H
CS12RA	CXL 12	50	200	161

### Coupler Strip ø16

Product Reference	Coupler Type	Width W	Length Li	Height H
CS16RA	CXL 16	50	380	161

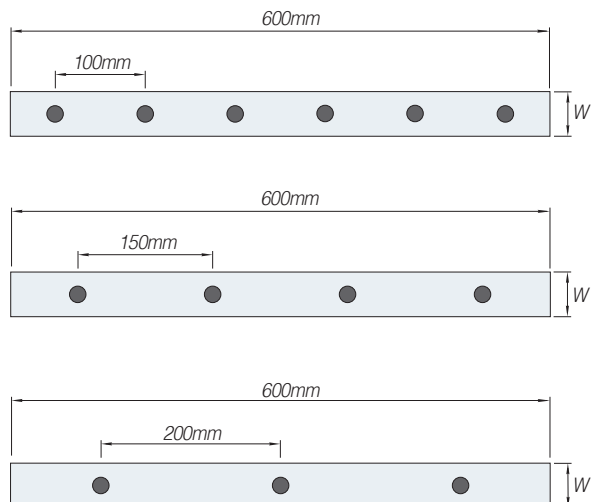
### Coupler Strip ø20

Product Reference	Coupler Type	Width W	Length Li	Height H
CS20RA	CXL 20	50	570	210

### Coupler Strip ø25

Product Reference	Coupler Type	Width W	Length Li	Height H
CS25RA	CXL 25	60	1110	265

## Standard Coupler Strip Length/Bar Centres



**Notes:** Length Li based on couplers at 150mm centres and grade C32/40 concrete  
All dimensions are in mm

# Ancon CXL Continuation Bars

Unlike re-bend continuity systems where bar lengths are restricted to the box dimensions, there is virtually no restriction on continuation bar length with either CB Coupler Boxes or CS Coupler Strips.

Grade B500B or B500C continuation bars, threaded with a CXL metric thread, are supplied by Ancon in 12mm, 16mm, 20mm and 25mm diameter. The CXL system is CARES approved and produces a full strength joint. The bar end is cut square and enlarged by cold forging.

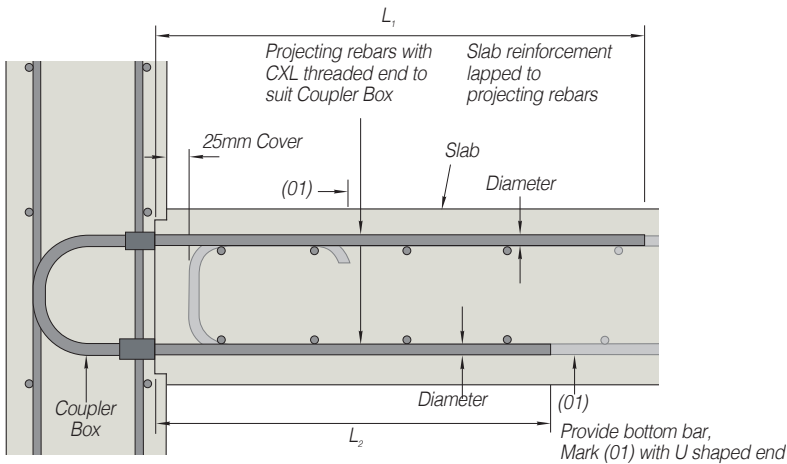
This increases the core diameter of the threaded portion of the bar to ensure that the strength of the bar is maintained. A parallel metric thread is applied to the enlarged bar end. A 12mm bar is provided with an M16 thread, a 16mm bar with an M20 thread, a 20mm bar with an

M24 thread and a 25mm bar with an M30 thread.

Bar lengths to BS EN 1992-1-1 (Eurocode 2) are given in the tables below.



No on-site bar straightening required



12, 16, 20 and 25mm diameter CXL continuation bars are available in virtually any length, including EC2 lap lengths

## Top Reinforcement to Eurocode 2

Bar Diameter	Thread Size	EC2 Full Tension Lap* C32/40		Minimum Length L <sub>1</sub> Required C32/40		Thread Length	Minimum Bar Length Required Good Bond	Minimum Bar Length Required Bad Bond
		Good Bond	Bad Bond	Good Bond	Bad Bond			
12	M16	630	890	670	930	16	690	950
16	M20	830	1190	870	1230	20	890	1250
20	M24	1040	1480	1082	1522	24	1110	1550
25	M30	1300	1850	1346	1896	30	1380	1930

Dimensions in millimetres.

\*Assumes contact lap ( $\alpha_2=1$ ) and 100% of bar lapped at one location.

## Bottom Reinforcement to Eurocode 2

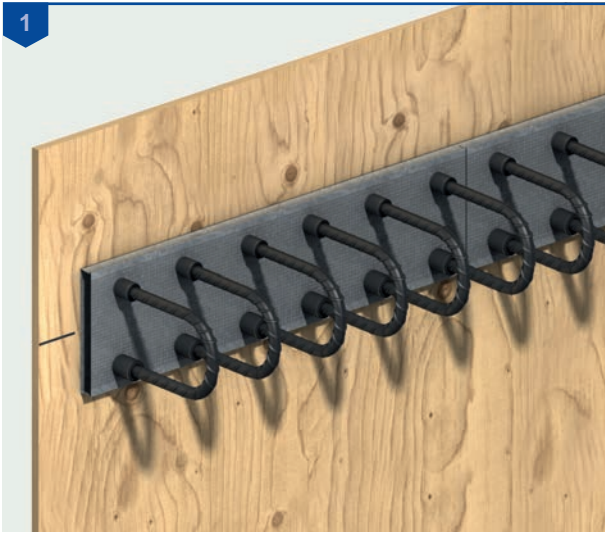
Bar Diameter	Thread Size	EC2 Tension Lap* C32/40	Minimum Length L <sub>2</sub> Required C32/40	Thread Length	Minimum Bar Length Required
12	M16	630	670	16	690
16	M20	830	870	20	890
20	M24	1040	1082	24	1110
25	M30	1300	1346	30	1380

Dimensions in millimetres.

\*Assumes contact lap ( $\alpha_2=1$ ) and 100% of bar lapped at one location.

**Note:** Good bond and bad bond conditions as defined in BS EN 1992-1-1 figure 8.2. C32/40 concrete and couplers at 150mm centres.

# CB Coupler Box Installation Guidance



The Coupler Box should be orientated according to the instructions on the label. Position as required. The complete unit is nailed to the formwork or alternatively wired back to the main reinforcement cage. Other wall reinforcement should be installed to the Engineer's details and the concrete is cast.



Install the Ancon CXL continuation bars ensuring no more than 2-4mm of thread is left exposed.

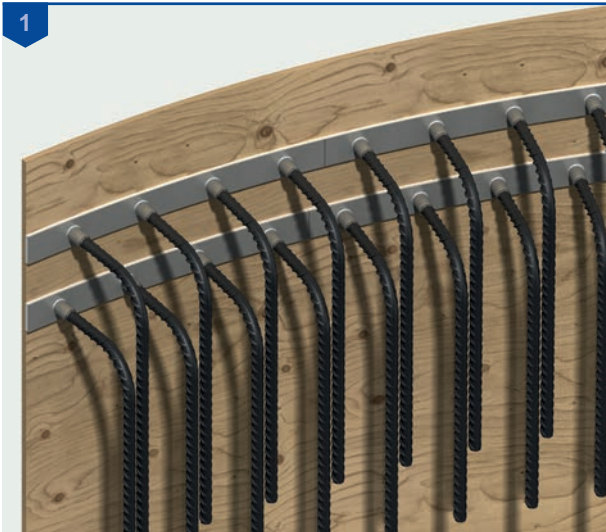


Once the concrete has reached sufficient strength, the formwork is removed to reveal the box face. When installation of the continuation bars is required, the box lid and coupler bolts are removed, revealing the internal threads.



Slab reinforcement should be installed to the Engineer's details and the slab is cast to complete the application.

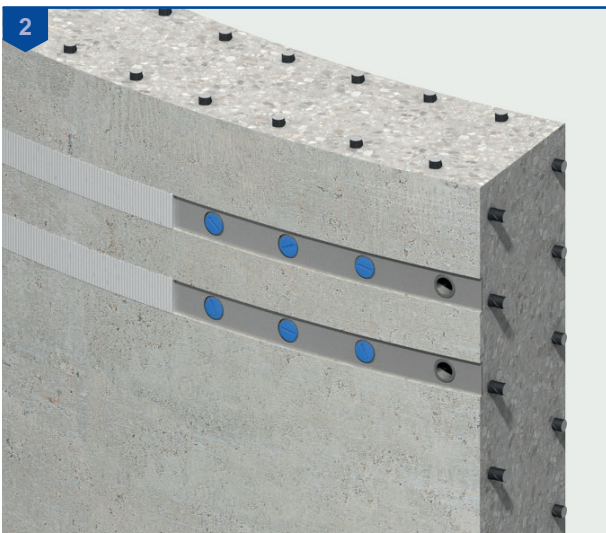
## CS Coupler Strip Installation Guidance



The Coupler Strip should be orientated as required. The complete unit is flexed against the curved formwork and either nailed in position or alternatively wired back to the main reinforcement cage. Other wall reinforcement should be installed to the Engineer's details and the concrete is cast.



Install the Ancon CXL continuation bars ensuring no more than 2-4mm of thread is left exposed.



Once the concrete has reached sufficient strength, the formwork is removed to reveal the 6mm thick corrugated plastic rebate former. When installation of the continuation bars is required, the rebate former and the recessed caps protecting the threads are removed, revealing the internal threads of the couplers.



Slab reinforcement should be installed to the Engineer's details and the slab is cast to complete the application.



# Leviat®

Innovative engineered products and construction solutions that allow the industry to build safer, stronger and faster.



## Worldwide contacts for Leviat:

### Australia

**Leviat**  
98 Kurrajong Avenue,  
Mount Druitt Sydney, NSW 2770  
Tel: +61 - 2 8808 3100  
Email: info.au@leviat.com

### Austria

**Leviat**  
Leonard-Bernstein-Str. 10  
Saturn Tower, 1220 Wien  
Tel: +43 - 1 - 259 6770  
Email: info.at@leviat.com

### Belgium

**Leviat**  
Borkelstraat 131  
2900 Schoten  
Tel: +32 - 3 - 658 07 20  
Email: info.be@leviat.com

### China

**Leviat**  
Room 601 Tower D, Vantone Centre  
No. A6 Chao Yang Men Wai Street  
Chaoyang District  
Beijing · P.R. China 100020  
Tel: +86 - 10 5907 3200  
Email: info.cn@leviat.com

### Czech Republic

**Leviat**  
Business Center Šafránková  
Šafránková 1238/1  
155 00 Praha 5  
Tel: +420 - 311 - 690 060  
Email: info.cz@leviat.com

### Finland

**Leviat**  
Vädursgatan 5  
412 50 Göteborg / Sweden  
Tel: +358 (0)10 6338781  
Email: info.fi@leviat.com

### France

**Leviat**  
6, Rue de Cabanis  
FR 31240 L'Union  
Toulouse  
Tel: +33 - 5 - 34 25 54 82  
Email: info.fr@leviat.com

### Germany

**Leviat**  
Liebigstrasse 14  
40764 Langenfeld  
Tel: +49 - 2173 - 970 - 0  
Email: info.de@leviat.com

### India

**Leviat**  
309, 3rd Floor, Orion Business Park  
Ghodbunder Road, Kapurbawdi,  
Thane West, Thane,  
Maharashtra 400607  
Tel: +91 - 22 2589 2032  
Email: info.in@leviat.com

### Italy

**Leviat**  
Via F.lli Bronzetti 28  
24124 Bergamo  
Tel: +39 - 035 - 0760711  
Email: info.it@leviat.com

### Malaysia

**Leviat**  
28 Jalan Anggerik Mokara 31/59  
Kota Kemuning, 40460 Shah Alam  
Selangor  
Tel: +603 - 5122 4182  
Email: info.my@leviat.com

### Netherlands

**Leviat**  
Oostermaat 3  
7623 CS Borne  
Tel: +31 - 74 - 267 14 49  
Email: info.nl@leviat.com

### New Zealand

**Leviat**  
2/19 Nuttall Drive, Hillsborough,  
Christchurch 8022  
Tel: +64 - 3 376 5205  
Email: info.nz@leviat.com

### Norway

**Leviat**  
Vestre Svanholmen 5  
4313 Sandnes  
Tel: +47 - 51 82 34 00  
Email: info.no@leviat.com

### Philippines

**Leviat**  
2933 Regus, Joy Nostalg,  
ADB Avenue  
Ortigas Center  
Pasig City  
Tel: +63 - 2 7957 6381  
Email: info.ph@leviat.com

### Poland

**Leviat**  
Ul. Obornicka 287  
60-691 Poznan  
Tel: +48 - 61 - 622 14 14  
Email: info.pl@leviat.com

### Singapore

**Leviat**  
14 Benoi Crescent  
Singapore 629977  
Tel: +65 - 6266 6802  
Email: info.sg@leviat.com

### Spain

**Leviat**  
Poligono Industrial Santa Ana  
c/ Ignacio Zuloaga, 20  
28522 Rivas-Vaciamadrid  
Tel: +34 - 91 632 18 40  
Email: info.es@leviat.com

### Sweden

**Leviat**  
Vädursgatan 5  
Grenzstrasse 24  
Tel: +46 - 31 - 98 58 00  
Email: info.se@leviat.com

### Switzerland

**Leviat**  
Hertistrasse 25  
3250 Lyss  
Tel: +41 - 31 750 3030  
Email: info.ch@leviat.com

### United Kingdom

**Leviat**  
President Way, President Park,  
Sheffield, S4 7UR  
Tel: +44 - 114 275 5224  
Email: info.uk@leviat.com

### United States of America

**Leviat**  
6467 S Falkenburg Rd.  
Riverview, FL 33578  
Tel: (800) 423-9140  
Email: info.us@leviat.us

### For countries not listed

Email: info@leviat.com

**Leviat.com**

#### Notes regarding this catalogue

© Protected by copyright. The construction applications and details provided in this publication are indicative only. In every case, project working details should be entrusted to appropriately qualified and experienced persons. Whilst every care has been exercised in the preparation of this publication to ensure that any advice, recommendations or information is accurate, no liability or responsibility of any kind is accepted by Leviat for inaccuracies or printing errors. Technical and design changes are reserved. With a policy of continuous product development, Leviat reserves the right to modify product design and specification at any time.

# Leviat®

For more information on these products, contact:

**Leviat**

President Way  
President Park  
Sheffield, S4 7UR  
United Kingdom

Tel: +44 (0) 114 275 5224

Fax: +44 (0) 114 276 8543

Email: [info.ancon.uk@leviat.com](mailto:info.ancon.uk@leviat.com)

For sales and technical enquiries:

Email: [reinforcement.uk@leviat.com](mailto:reinforcement.uk@leviat.com)

[Ancon.co.uk](http://Ancon.co.uk)

[Leviat.com](http://Leviat.com)

Imagine. Model. Make.

[Leviat.com](http://Leviat.com)