

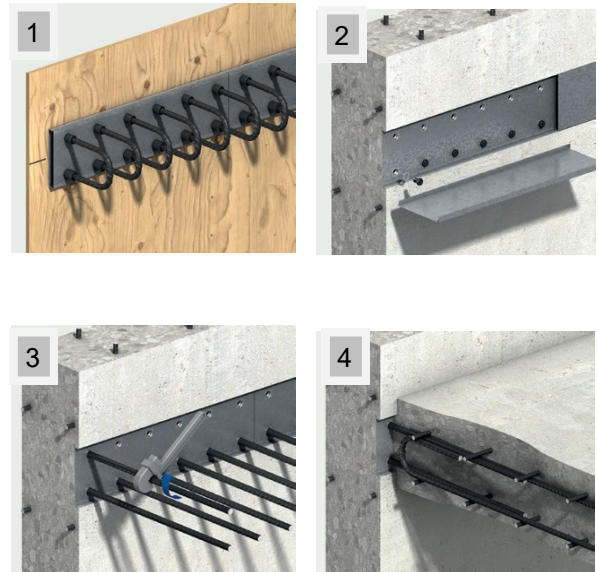
Installation Guide

CB Coupler Box and CS Coupler Strip

Ancon CB Coupler Boxes simplify the continuity of reinforcement at concrete construction joints. They allow engineers to design slab-to-wall connections without the traditional restrictions on bar length and bar diameter of re-bend/pull-out continuity systems and help contractors to eliminate manual bar straightening on site.

CB Coupler Box Installation

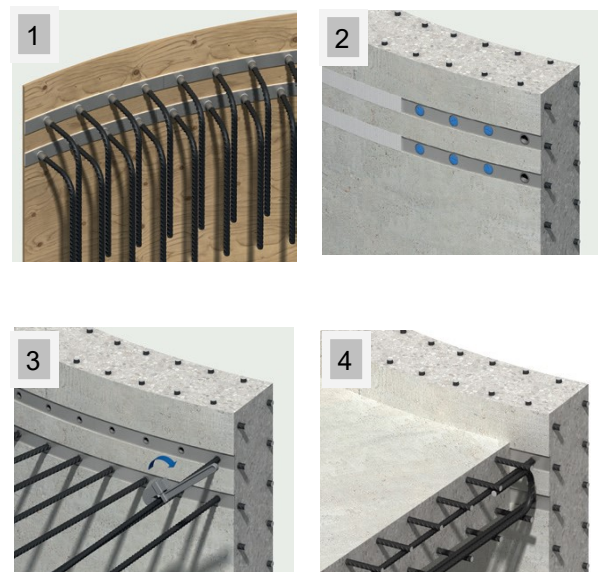
1. The Coupler Box should be orientated according to the instructions on the label. Position as required. The complete unit is nailed to the formwork or alternatively wired back to the main reinforcement cage. Other wall reinforcement should be installed to the Engineer's details and the concrete is cast.
2. Once the concrete has reached sufficient strength, the formwork is removed to reveal the box face. When installation of the continuation bars is required, the box lid and coupler bolts are removed, revealing the internal threads.
3. Install the Ancon CXL continuation bars, ensuring that they are fully tightened. Once tightened, no more than 2-4mm of thread should be left exposed.
4. Slab reinforcement should be installed to the Engineer's details and the slab is cast to complete the application.



Ancon CS Coupler Strips offer all the benefits of CB Coupler Boxes and are specifically designed to simplify rebar continuity at joints where walls are curved on plan. The flexible steel strip used to carry the couplers is nailed directly to curved shuttering.

CS Coupler Strip Installation

1. The Coupler Strip should be orientated as required. The complete unit is flexed against the curved formwork and either nailed in position or alternatively wired back to the main reinforcement cage. Other wall reinforcement should be installed to the Engineer's details and the concrete is cast.
2. Once the concrete has reached sufficient strength, the formwork is removed to reveal the 6mm thick corrugated plastic rebate former. When installation of the continuation bars is required, the rebate former and the recessed caps protecting the threads are removed, revealing the internal threads of the couplers.
3. Install the Ancon CXL continuation bars, ensuring that they are fully tightened. Once tightened, no more than 2-4mm of thread should be left exposed.
4. Slab reinforcement should be installed to the Engineer's details and the slab is cast to complete the application.



The Construction applications and details provided in this guide are indicative only. In every case installation should be entrusted to appropriately qualified and experienced persons. Normal handling precautions should be taken to avoid physical injury. The company cannot be held responsible for any injury as a result of using our products, unless such injury arises as a result of our negligence.

© Protected by copyright