

Leviat[®]
A CRH COMPANY

Ideal for
LNG/LPG
storage
tanks

Ancon[®]

Reinforcing Bar Couplers for Cryogenic Applications

Tested at -168°C/-270°F to EN 14620-3
with cryogenic- grade rebar



We are one team. **We are Leviat.**

Leviat is the new name of
CRH's construction accessories
companies worldwide.

Under the Leviat brand, we are uniting the expertise, skills and resources of Ancon and its sister companies to create a world leader in fixing, connecting and anchoring technology.

The products you know and trust will remain an integral part of Leviat's comprehensive brand and product portfolio. As Leviat, we can offer you an extended range of specialist products and services, greater technical expertise, a larger and more agile supply chain and better, faster innovation.

By bringing together CRH's construction accessories family as one global organisation, we are better equipped to meet the needs of our customers, and the demands of construction projects, of any scale, anywhere in the world.

This is an exciting change. Join us on our journey.

Read more about Leviat at [Leviat.com](https://www.leviat.com)



Our product brands include:

Ancon®


HALFEN

HELIFIX 

 **ISEDIO**

PLAKA



60

locations

sales in
30+
countries

3000

people worldwide

Imagine. Model. Make.

Leviat.com

Tapered Thread Reinforcing Bar Couplers for Cryogenic Applications

The Ancon CTT range of tapered-thread couplers has been designed for use where cryogenic-grade reinforcing bar is being used. Typical construction projects include liquefied natural gas (LNG) and liquefied petroleum gas (LPG) storage tanks to EN 14620-3.

System Benefits

- ✓ Suitable for use in structures built in accordance with EN 14620-33
- ✓ Independently tested with cryogenic-grade rebar at ambient and cryogenic (-168°C/-270°F) temperatures
- ✓ Compact coupler design, suitable for confined locations
- ✓ Tapered-thread design simplifies bar alignment and engagement without cross-threading
- ✓ Installed quickly and easily, accelerating build speed

Structures to EN 14620-3

Ancon CTT couplers are suitable for use in structures built in accordance with EN 14620-3:2006. This Standard specifies the general requirements for materials, design and construction of all concrete components of site-built, vertical, cylindrical, flat-bottomed steel tanks for the storage of refrigerated, liquefied gases with operating temperatures between 0°C and -165°C. BS EN 14620-3: 2006 supersedes BS 7777-3: 1993.

Cryogenic-grade Rebar

Krybar® is a specially-designed concrete reinforcing steel for cryogenic applications. 'KRYBAR -165' is suitable for use in storage tanks with temperatures down to -170°C/-274°F and was the cryogenic-grade rebar used in the test programme undertaken by Leviat.

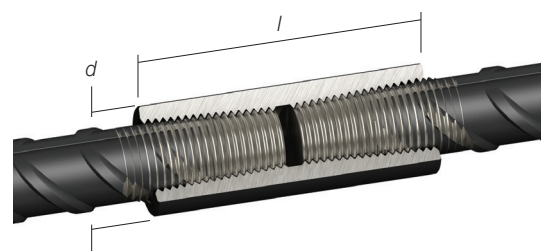
CTT Product Range

The Ancon range comprises standard, positional and transitional couplers to suit bar diameters from 12mm to 32mm. In all cases, the ends of the rebar are cut square before a tapered thread is cut onto the bar to suit the tapered thread of the coupler. The sleeve is simply tightened onto the threaded bar end using a calibrated torque wrench.

Standard Cryogenic Couplers (CTTS)

The standard Ancon tapered-thread cryogenic coupler is suitable for connecting two bars of the same diameter, where one bar can be rotated.

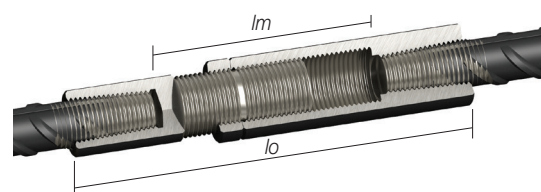
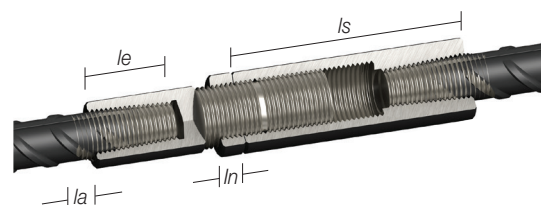
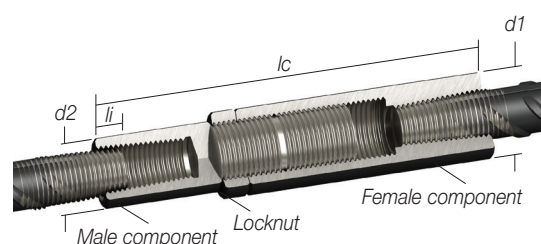
Bar Diameter (mm)		12	14	16	20	25	28	32
External Dia. (mm)	d	22	22	25	30	36	42	48
Coupler Length (mm)	l	58	64	70	74	90	100	112
Weight (kg)		0.13	0.12	0.17	0.25	0.43	0.66	0.99
Torque (Nm)		60	85	110	165	265	275	285
Part No.		CTTS12	CTTS14	CTTS16	CTTS20	CTTS25	CTTS28	CTTS32



Positional Cryogenic Couplers (CTTP)

The positional Ancon tapered-thread cryogenic coupler is designed for use where neither bar can be rotated. It comprises a male section, a female section and a locking nut. Having a degree of adjustability, this coupler can be used as a closer between two fixed bars.

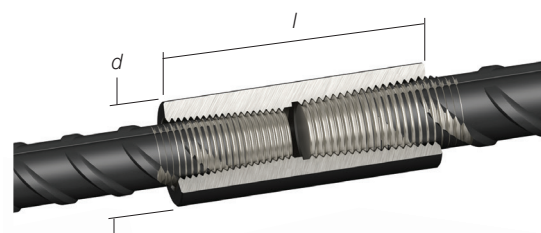
Bar Diameter (mm)		12	14	16	20	25	28	32
External Dia. (mm)	$d1$	25	25	30	36	48	50	55
External Dia. (mm)	$d2$	22	22	25	30	36	42	48
Female Sleeve Length (mm)	ls	84	89	95	112	132	137	153
Locknut Length (mm)	ln	13	13	13	13	13	13	15
Closed Length (mm)	lc	138	150	155	180	207	218	243
Max. Open Length (mm)	lo	178	190	196	231	266	274	305
Bar Insertion Prior to Engagement (mm)	li	9	12	15	8	16	22	28
Bar Insertion Full Engagement (mm)	le	26	29	32	33	42	47	53
Adjustable Length (mm)	la	23	23	24	26	34	34	37
Max Distance between Bar Ends (mm)	lm	126	124	132	165	182	174	199
Weight (kg)		0.44	0.67	0.67	1.12	2.21	2.30	3.51
Coupler Torque (Nm)		60	85	110	165	265	275	285
Locknut Torque (Nm)		20	25	30	50	70	80	90
Part No.		CTTP12	CTTP14	CTTP16	CTTP20	CTTP25	CTTP28	CTTP32



Transitional Cryogenic Couplers (CTTT)

The transitional Ancon tapered-thread cryogenic coupler is designed to join reinforcing bars of different diameters, where one bar can be rotated.

Bar Diameter (mm)		12/14	12/16	14/16	16/20	20/25	25/28	25/32	28/32
External Dia. (mm)	d	22	25	25	30	36	42	48	48
Coupler Length (mm)	l	65	72	71	78	90	99	112	110
Weight (kg)		0.14	0.21	0.19	0.30	0.48	0.72	1.11	1.02
Torque (Nm)		60/85	60/110	85/110	110/165	165/265	265/275	265/285	275/285
Part No.		CTTT12/14	CTTT12/16	CTTT14/16	CTTT16/20	CTTT20/25	CTTT25/28	CTTT25/32	CTTT28/32





For more information on these products, contact:

Leviat

President Way
President Park
Sheffield, S4 7UR
United Kingdom

Tel: +44 (0) 114 275 5224
Fax: +44 (0) 114 276 8543

Email: info.ancon.uk@leviat.com

For sales and technical enquiries:
Email: reinforcement.uk@leviat.com

Ancon.co.uk
Leviat.com